

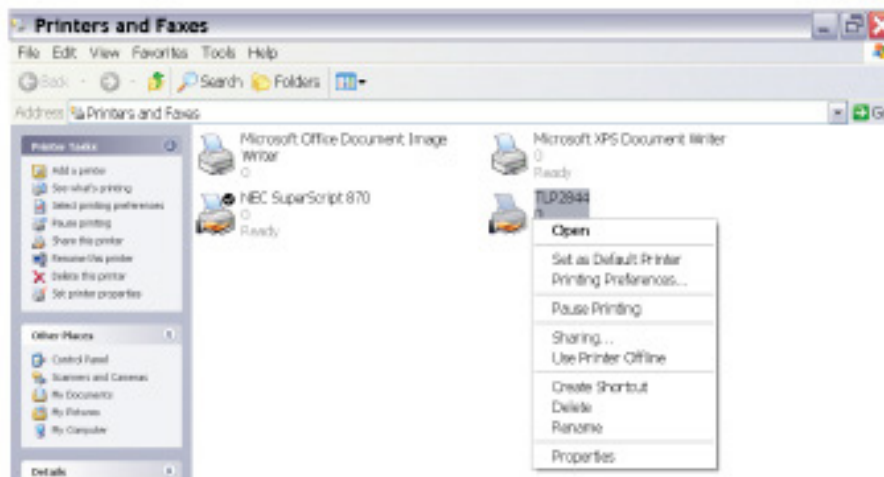


Resetting Defaults for a USB printer for Win XP and Earlier

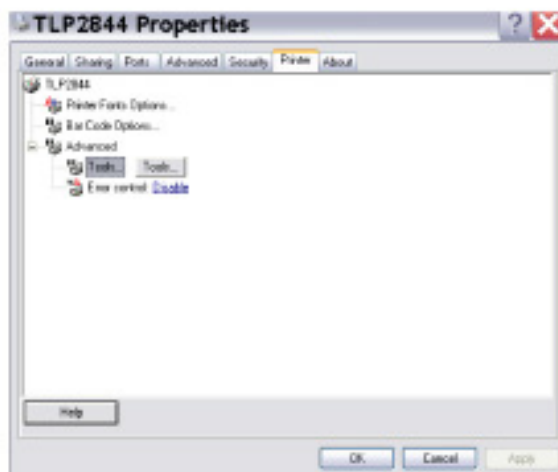
Please note that if you have Server 2003, WinXP or earlier, it is best to **not** install the ZDesigner Driver. Please install the Zebra Universal Driver, which can be found on www.zebra.com. If you have Vista, Win7 or Server 2008, you will have to install the ZDesigner Driver.

Instructions for the Universal Driver

- 1) Go to the Start button.
- 2) Select Printers & Faxes.
- 3) Right click on the TLP2488 printer and choose Properties.

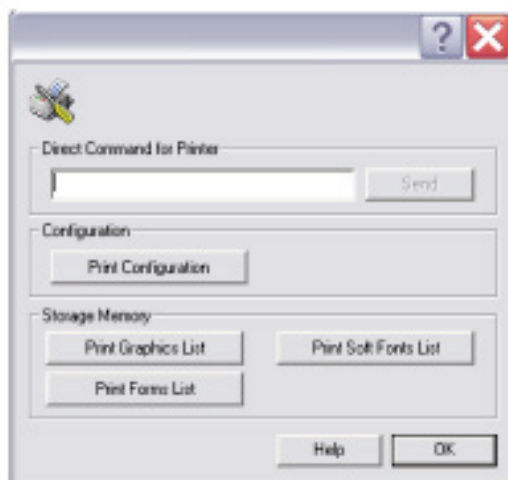


- 4) Locate & Select the Printer tab.
 - a. Choose Advanced Options.
 - b. Choose Tools.





- c. Enter the following commands exactly as they are written, pressing the "Send" button after each command.
- i. **^default** (Send)
 - ii. **O** (Send) *Letter O, not zero*
 - iii. **xa** (Send)
 - iv. **U** (Send)



- d. Printer will recalibrate and should print properly.
- 5) Now, you should be ready to print labels directly from the PMI Evidence Tracker™ software.

Note: If for some reason this procedure does not appear to reset the defaults, repeat the entire list of instructions and test the printer again by printing off an evidence label. There have been occasions where the Zebra printer does not reset after the first attempt. Please contact PMI at (800) 325-7636 or (904) 797-1050 with any questions or if you need additional assistance with your printer setup.

