

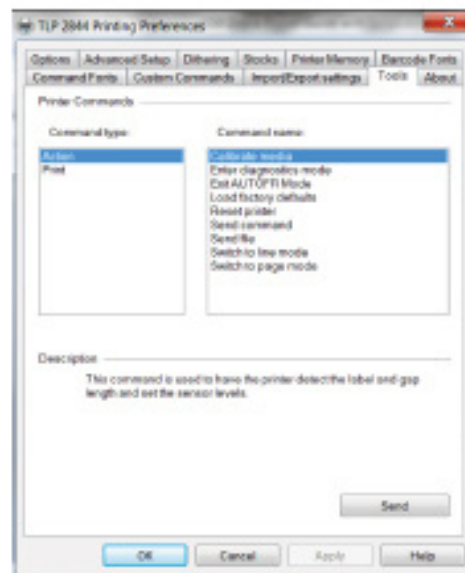


## Resetting Defaults for a USB printer on Win7 or Vista

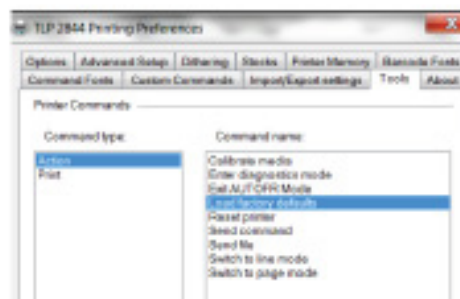
If you have Vista, Win7 or Server 2008, please install the ZDesigner Driver, which can be found on [www.zebra.com](http://www.zebra.com).

### Instructions for the ZDesigner Driver

- 1) Go to the Start button.
- 2) Select Devices & Printers.
- 3) Right click on the TLP2488 printer and choose *Printing Preferences*.
- 4) Locate & Select the *Tools* tab.



- a. Make sure to keep *Command Type* as *Action*.
- b. In the *Command Name* column choose *Load factory defaults*.



Progressive Microtechnology, Inc. \* 4425 U.S. 1 South, Suite 101 \* St. Augustine, FL 32084 \* (800) 325-7636



- c. Go back to the PMI Evidence Tracker™ and re-print your label.
- 5) If the printer does not reset and the label does not print correctly, try resetting the printer manually.
- a. Repeat steps 1 through 4a.
  - b. Make sure to keep *Command Type* as *Action*.
  - c. This time select *Send command* in the *Command Name* column.
  - d. Enter the following commands exactly as they are written, pressing the "Send" button after each command.
    - i. **^default**      **(Send)**
    - ii. **O**              **(Send)** *Letter O, not zero*
    - iii. **xa**             **(Send)**
    - iv. **U**                **(Send)**
  - e. Printer will recalibrate and should print properly.
  - f. You should now be ready to print labels directly from the PMI Evidence Tracker™ software.

